

FEATURES

- Latching Relays
- 100A switching capabilities
- High Shock & Vibration Resistance
- Heavy load up to 27.7KVA
- 4KV dielectric strength between coil and contacts

CONTACT RATING

Rated Load	100A 277VAC/28VDC
Max. Switching Current	100A
Max. Switching Voltage	440VAC
Max. Switching Power	Single: 2.4W; Double: 4.8W

CONTACT DATA

Material	AgCdO	
Initial Contact Resistance	50 mΩ max. at 1A, 24VDC	
Service Life	Mechanical	10 ⁶ ops.
	Electrical	2 x 10 ⁴ ops

COIL DATA

SINGLE COIL

Coil Voltage Code	Nominal Voltage (VDC)	Resistance (Ω) ±10%		Must Operate Voltage max. (VDC)	Pulse Duration (ms)
		Power Consumption			
006	6	16	2.4W	4.8	200
012	12	60		9.6	
024	24	250		19.2	
048	48	1000		38.4	

DUAL COIL

Coil Voltage Code	Nominal Voltage (VDC)	Resistance (Ω) ±10%		Must Operate Voltage max. (VDC)	Pulse Duration (ms)
		Power Consumption			
006	6	2x8	4.8W	4.8	200
012	12	2x30		9.6	
024	24	2x125		19.2	
048	48	2x500		38.4	

CHARACTERISTICS

Operate Time	20 ms.
Release Time	20 ms.
Insulation Resistance	1000 MΩ at 500VDC
Creepage Distance	8mm
Dielectric Strength	4000 VAC, 1 min. between coil and contacts 2000 VAC, 1 min. between open contacts
Shock Resistance	98m/s ² functional; 980m/s ² destructive
Vibration Resistance	DA: 1.0mm, 10 to 55Hz
Power Consumption	Single Coil: 2.4W 200ms Pulse Duration; Dual Coil: 4.8W 200ms Pulse Duration
Humidity	98%, +40°C
Ambient Temperature	-40°C to 70°C operating
Weight	100 g, approx.

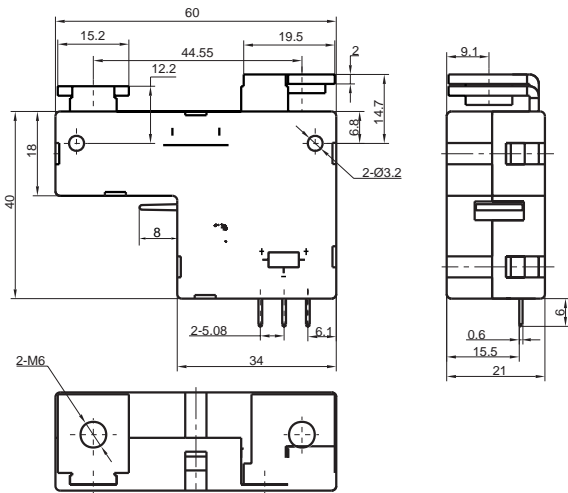
ORDERING DESIGNATION

Example:	HG4544 /	012 -	2	A	A	4	F
Model							
Coil Voltage Code							
Version							
2: Dust cover							
Coil Type							
A: Single Coil; B: Dual Coil							
Contact Terminal							
A: Type A; B: Type B; C: Type C							
Mounting Code							
Nil: No Mounting Board; B: With Micro-Switch on Mounting Board (Set/Reset-Status Detector)							
Termination Code							
4: PCB; 9: QC 1/9 inch							
Thermal Class							
Nil: UL Class B; F: UL Class F							

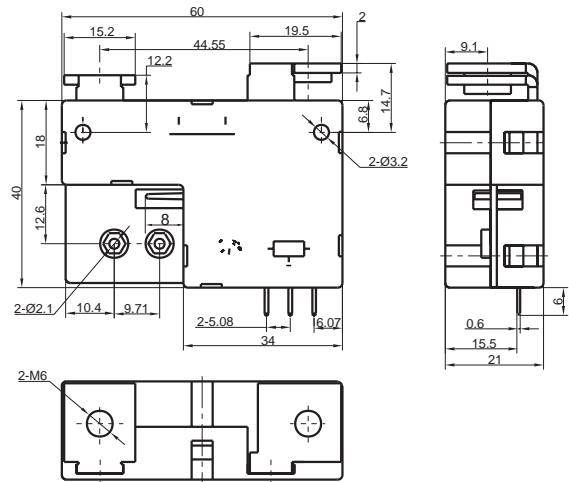
OVERALL DIMENSIONS, MOUNTING HOLES AND WIRING DIAGRAMS (mm)

Overall Dimensions

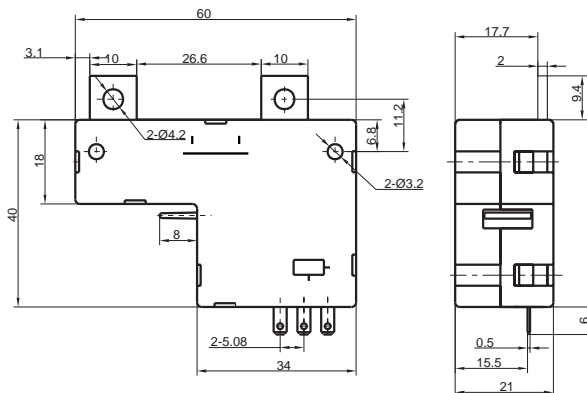
Type A Terminal, No Mounting Board



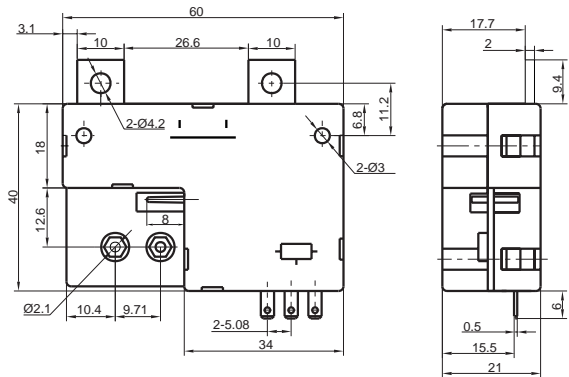
Type A Terminal, with Micro-Switch Mounting Board



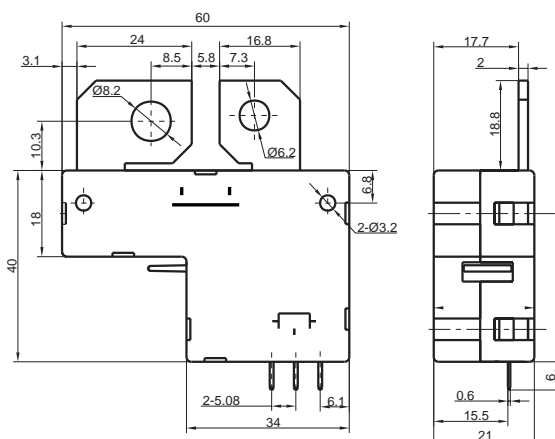
Type B Terminal, No Mounting Board



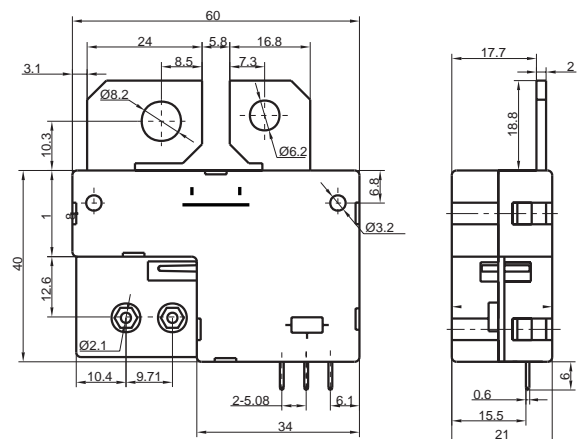
Type B Terminal, with Micro-Switch Mounting Board

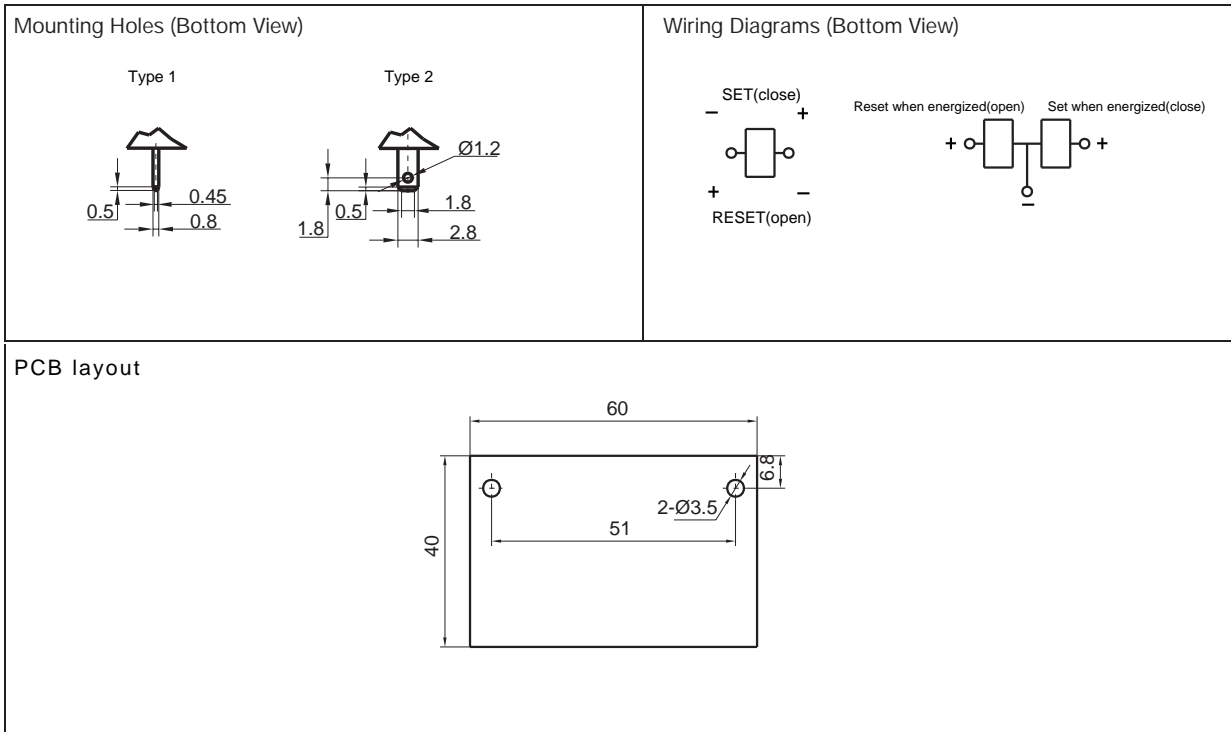


Type C Terminal, No Mounting Board



Type C Terminal, with Micro-Switch Mounting Board





NOTES

1. All parameters, unless otherwise specified, are measured at ambient temperature 20°C.
2. For single coil latching version the wiring diagram show reset position. Energize terminal 1 and 16 to set and reverse energize the terminal 1 and 16 to reset.
3. For dual coil latching version the wiring diagram show reset position. Energize terminal 1 and 16 to set and energize the terminal 2 and 15 to reset.
4. Custom-made services available with operational quantity. Please let us know your special requirements.
5. Specifications subject to change without prior notice.

T Y H Enterprise Limited
 Room 1620B, Nan Fung Centre
 264-298 Castle Peak Road
 Tsuen Wan, N.T.
 Hong Kong
 Tel: 852-2416-0132
 Fax: 852-2413-6229
<http://www.tyhhk.com>
 email: info@tyhhk.com

Plant: Shanghai Hi-Gradex Relay Mfg. Co., Ltd
 918 Shixin Road
 Airport Town
 Pudong New Area
 Shanghai 201202
 China
 Tel: 86-21-6299-5619 / -5877
 Fax: 86-21-6299-5619
 email: tyhesh@online.sh.cn